

<b>VICTRONIX</b>	<b>Add:</b>	Room 1405A, Building 1B, Hua qiang Idea Park, GuangMing District, Shenzhen, China		
	<b>Tel:</b>	+86-755-33265935	<b>Fax :</b>	+86-755-33265935

# SPECIFICATION

## VXT174MYKH-01

- Preliminary Specification
- Final Specification



<p><b>Approved By:</b></p>          <p><b>Date:</b></p>
---

2.

Date	Rev.No	Page	Revision Items	Prepared
<b>2021-05-27</b>	<b>V00</b>		<b>The first release</b>	<b>Solon</b>

### 3. General Specifications

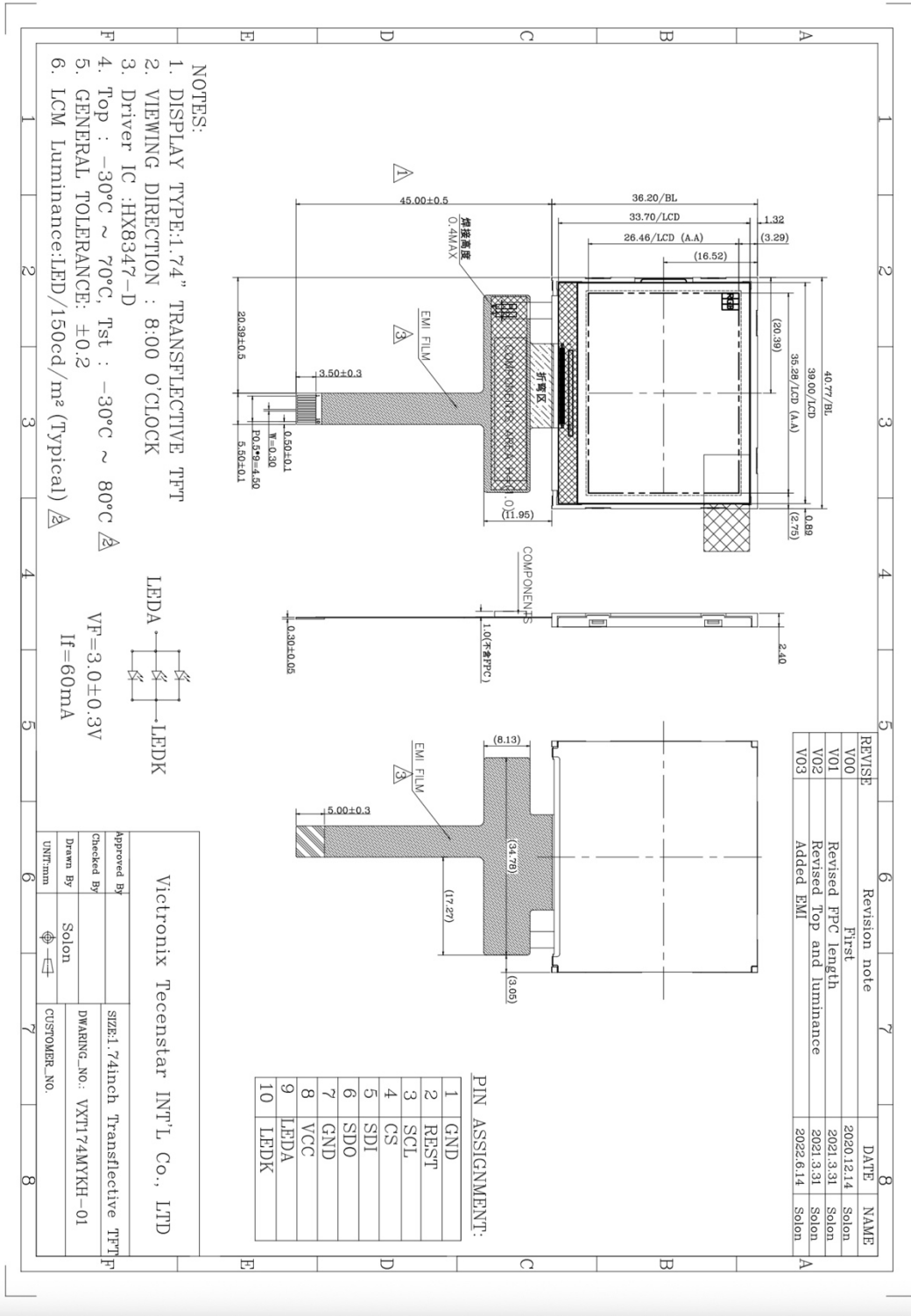
VXT174MYKH-01 is a TFT-LCD module. It is composed of a TFT-LCD panel, driver IC, FPC, a back light unit. The 1.74" display area contains 240 x (RGB) x 128 pixels and can display up to 262K colors. This product accords with ROHS environmental criterion..

Item	Contents	Unit	Note
LCD Type	TFT	-	
Display color	262K	-	1
Viewing Direction	8:00	O'Clock	
Operating temperature	-30 ~ +70	°C	
Storage temperature	-30 ~ +80	°C	
Module size	40.77 x 36.20 x 2.40	mm	2
Active Area(W×H)	35.28 x 26.46	mm	
Number of Dots	240 x 128	dots	
TFT Controller	HX8347-D	-	
Power Supply Voltage	2.8	V	
Backlight	3P-LEDs (white)	pcs	
Weight	---	g	
Interface	3-Line-SPI	-	

Note 1: Color tune is slightly changed by temperature and driving voltage.

Note 2: Without FPC and Solder.

## 4.Outline.Drawing



## 5. Absolute Maximum Ratings(Ta=25°C)

### 5.1 Electrical Absolute Maximum Ratings.(Vss=0V ,Ta=25°C)

Item	Symbol	Min.	Max.	Unit	Note
Power Supply Voltage	VCC	-0.3	4.6	V	1, 2

Notes:

1. If the module is above these absolute maximum ratings. It may become permanently damaged. Using the module within the following electrical characteristic conditions are also exceeded, the module will malfunction and cause poor reliability.
2.  $V_{CC} > V_{SS}$  must be maintained.
3. Please be sure users are grounded when handing LCD Module

### 5.2 Environmental Absolute Maximum Ratings.

Item	Storage		Operating		Note
	MIN.	MAX.	MIN.	MAX.	
Ambient Temperature	-30°C	80°C	-30°C	70°C	1,2
Humidity	-	-	-	-	3

Notes:

1. The response time will become lower when operated at low temperature.
2. Background color changes slightly depending on ambient temperature.  
The phenomenon is reversible.
3.  $T_a \leq 40^\circ\text{C}$ :85%RH MAX.  
 $T_a \geq 40^\circ\text{C}$ :Absolute humidity must be lower than the humidity of 85%RH at 40°C.

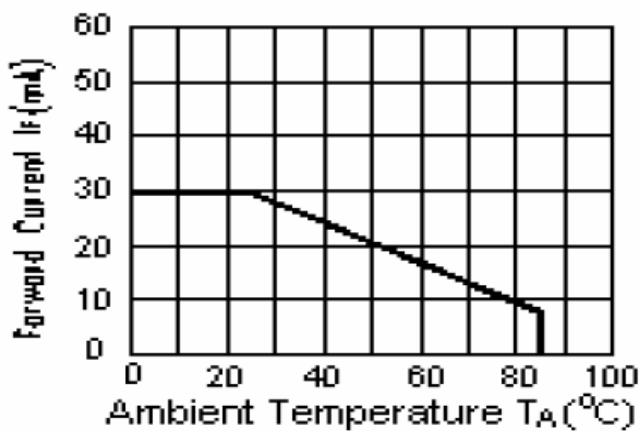
## 6. Electrical Specifications

### 6.1 Electrical characteristics(V<sub>ss</sub>=0V ,T<sub>a</sub>=25°C)

Parameter	Symbol	Condition	Min	Typ	Max	Unit	Note
Power supply	VCC	T <sub>a</sub> =25°C	2.5	2.8	3.3	V	
Input voltage	'H'	V <sub>IH</sub>	T <sub>a</sub> =25°C	0.7*VCC	-	VCC	V
	'L'	V <sub>IL</sub>	T <sub>a</sub> =25°C	VSS	-	0.3*VCC	V

### 6.2 LED backlight specification(V<sub>SS</sub>=0V ,T<sub>a</sub>=25°C)

Item	Symbol	Condition	Min	Typ	Max	Unit	Note
Supply voltage	V <sub>f</sub>	I <sub>f</sub> =60mA	2.7	3.0	3.3	V	
Uniformity	Δ Bp	I <sub>f</sub> =60mA	75	80	-	%	
Life Time	time	I <sub>f</sub> =60mA	20K	-	-	hours	1



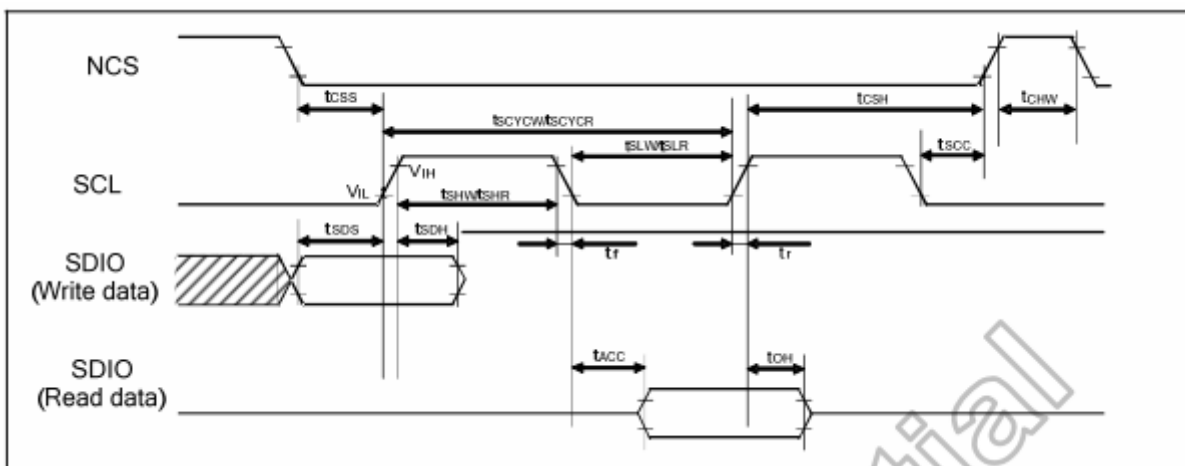
Note 1: Brightness to be decreased to 50% of the initial value at ambient temperature T<sub>A</sub>=25°C

## 6.3 Interface signals

Pin No.	Symbol	I/O	Function
1	GND	P	Ground.
2	REST	I	Reset pin,active"L".
3	SCL	I	serial interface clock pin.
4	CS	I	Chip select signal.
5	SDI	I	SPI interface data input /output pin.
6	SDO	-	No use ,please NC.
7	GND	P	Ground.
8	VCC	P	Power supply.
9	LEDA	P	LED back light(Anode).
10	LEDK	P	LED back light(Cathode).

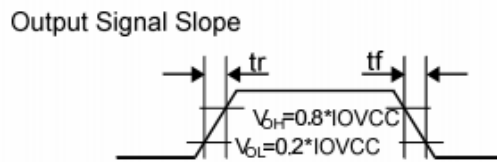
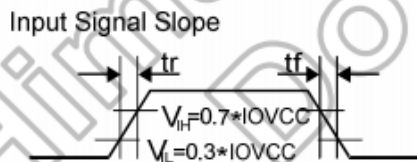
## 6.4 AC Characteristics

### 6.4.1 Serial Interface Characteristics (3-line Serial)



Parameter	Symbol	Conditions	Min.	Typ.	Max.	Unit
Serial clock cycle (Write)	t <sub>SCYCW</sub>		20	-	-	
SCL "H" pulse width (Write)	t <sub>SHW</sub>	SCL	8	-	-	ns
SCL "L" pulse width (Write)	t <sub>SLW</sub>	SCL	8	-	-	
Data setup time (Write)	t <sub>SDS</sub>	SDIO	10	-	-	ns
Data hold time (Write)	t <sub>SDH</sub>	SDIO	10	-	-	
Serial clock cycle (Read)	t <sub>SCYCR</sub>		150	-	-	
SCL "H" pulse width (Read)	t <sub>SHR</sub>	SCL	60	-	-	ns
SCL "L" pulse width (Read)	t <sub>SLR</sub>	SCL	60	-	-	
Access Time	t <sub>ACC</sub>	SDI for maximum C <sub>L</sub> =30pF For minimum C <sub>L</sub> =8pF	10	-	50	ns
Output disable time	t <sub>OH</sub>	SDO For maximum C <sub>L</sub> =30pF For minimum C <sub>L</sub> =8pF	15	-	50	ns
SCL to Chip select	t <sub>SCC</sub>	SCL, NCS	20	-	-	ns
NCS "H" pulse width	t <sub>CHW</sub>	NCS	40	-	-	ns
Chip select setup time	t <sub>CSS</sub>	NCS	15	-	-	ns
Chip select hold time	t <sub>CSH</sub>	NCS	15	-	-	ns

**Note:** The input signal rise time and fall time (tr, tf) is specified at 15 ns or less.  
Logic high and low levels are specified as 30% and 70% of IOVCC for Input signals.



## 6.4.2 Reset input timing

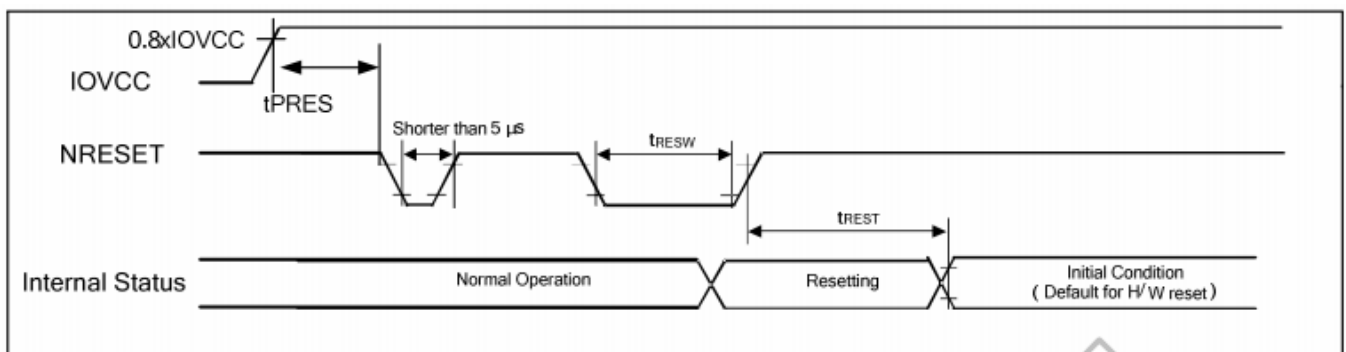


Figure 11. 5 Reset Input Timing

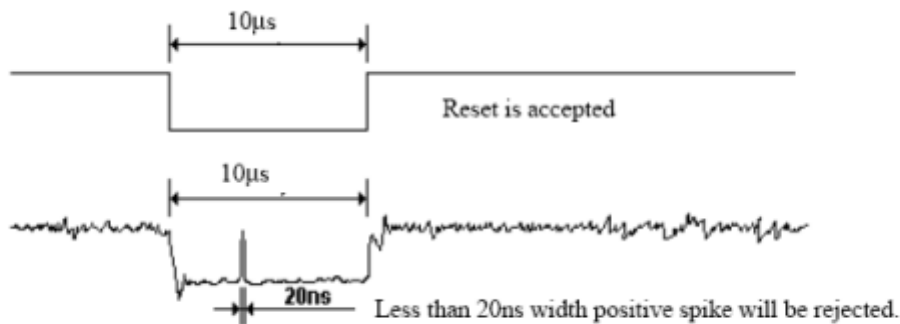


Symbol	Parameter	Related Pins	Spec.			Note	Unit
			Min.	Typ.	Max.		
tRESW	Reset low pulse width <sup>(1)</sup>	NRESET	10	-	-		μs
tREST	Reset complete time <sup>(2)</sup>	-	-	-	5	When reset applied during STB mode	ms
		-			120	When reset applied during STB mode	ms
tPRES	Reset goes high level after Power on time	NRESET & IOVCC	1	-	-	Reset goes high level after Power on	ms

**Note:** (1) Spike due to an electrostatic discharge on NRESET line does not cause irregular system reset according to the table below.

NRESET Pulse	Action
Shorter than 5 μ	Reset Rejected
Longer than 10 μs	Reset
Between 5 μs and 10 μs	Reset Start

- (2) During the resetting period, the display will be blanked (The display is entering blanking sequence, which maximum time is 120 ms, when Reset Starts in STB Out –mode. The display remains the blank state in STB –mode) and then return to Default condition for H/W reset.
- (3) During Reset Complete Time, VMF value in OTP will be latched to internal register during this period. This loading is done every time when there is H/W reset complete time (tREST) within 5ms after a rising edge of NRESET.
- (4) Spike Rejection also applies during a valid reset pulse as shown below:



(5) It is necessary to wait 5msec after releasing !RES before sending commands. Also STB Out

## 7. Optical Characteristics

### 1. Transmissive mode:

Item	Symbol	Condition	Min.	Typ.	Max.	Unit	Note

Brightness	Bp		$\theta=0^\circ$ $\Phi=0^\circ$	-	150	-	Cd/m <sup>2</sup>	1	
Uniformity	$\triangle Bp$			70	90	-	%	1,2	
Viewing Angle	3:00		Cr $\geq$ 10	40	50	-	Deg	3	
	6:00			40	50	-			
	9:00			30	40	-			
	12:00			30	40	-			
Contrast Ratio	Cr		$\theta=0^\circ$ $\Phi=0^\circ$	100	130	-	-	4	
Response Time	T <sub>r</sub>			-	10	15	ms	5	
	T <sub>f</sub>			-	20	30	ms		
Color of CIE Coordinate	W	x	$\theta=0^\circ$ $\Phi=0^\circ$	Typ -0.05	0.302	Typ +0.05	-	1,6	
		y			0.321		-		
	R	x			0.598		-		
		y			0.314		-		
	G	x			0.291		-		
		y			0.561		-		
	B	x			0.143		-		
		y			0.188		-		
NTSC Ratio	S		-	46	-	%			

## 2.Reflective mode:

**Backlight: Off**

Item	Symbol	Condition	Min	Typ	Max	Unit	Remark	Note
Reflectance	R%	$\theta=0^\circ$	---	7.5	---	%	FIG.2	/
Contrast ratio (Reflectance) (with polarizer)	Cr	$\theta=0^\circ$ $T_a=25^\circ\text{C}$	---	6	---	---	/	/

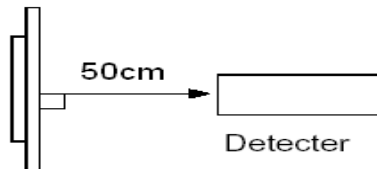
Note: The parameter is slightly changed by temperature, driving voltage and materiel

Note 1: The data are measured after LEDs are turned on for 5 minutes. LCM displays full white. The brightness is the average value of 9 measured spots. Measurement equipment PR-705 ( $\Phi 8\text{mm}$ )

Measuring condition:

- Measuring surroundings: Dark room.
- Measuring temperature:  $T_a=25^\circ\text{C}$ .
- Adjust operating voltage to get optimum contrast at the center of the display.

Measured value at the center point of LCD panel after more than 5 minutes while backlight turning on.

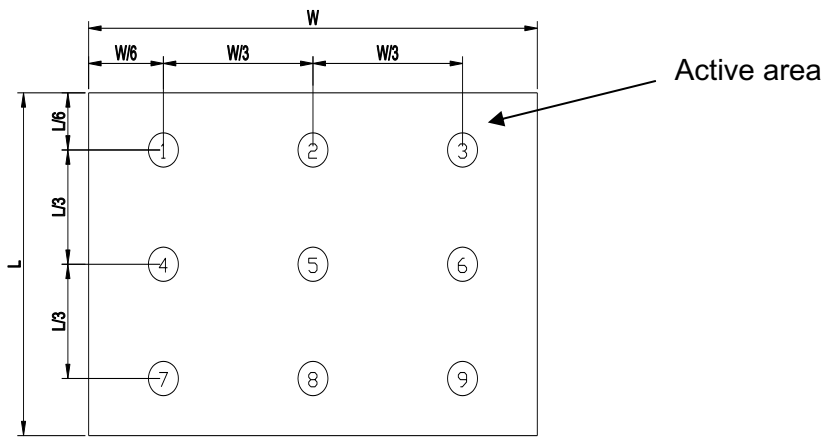


Note 2: The luminance uniformity is calculated by using following formula.

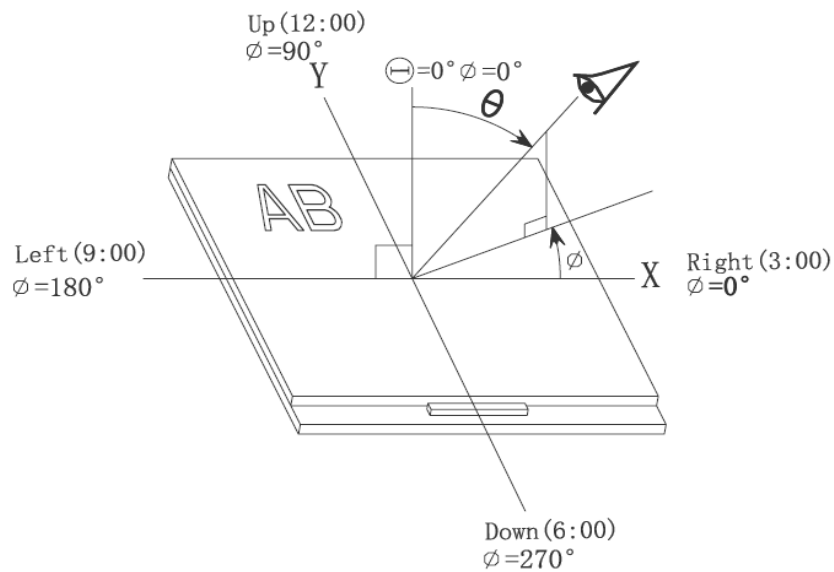
$$\Delta B_p = B_p (\text{Min.}) / B_p (\text{Max.}) \times 100 (\%)$$

$B_p (\text{Max.})$  = Maximum brightness in 9 measured spots

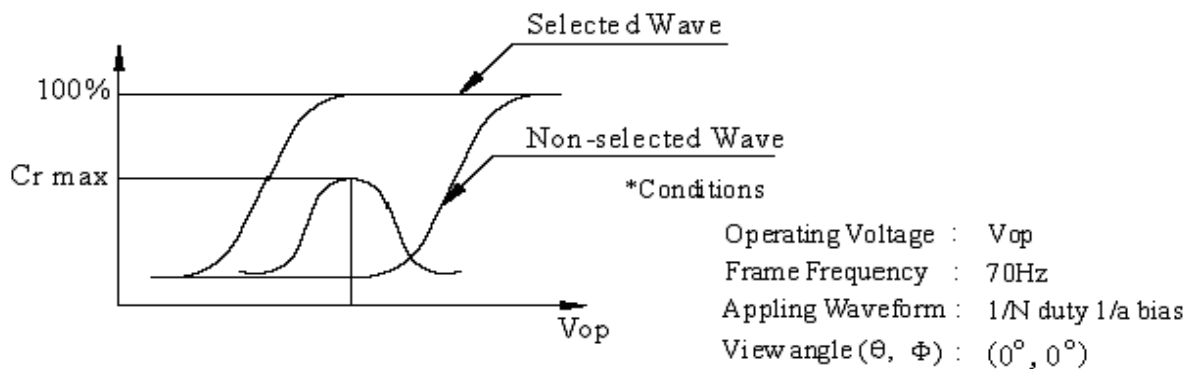
$B_p (\text{Min.})$  = Minimum brightness in 9 measured spots.



Note 3: The definition of viewing angle:  
Refer to the graph below marked by  $\theta$  and  $\phi$



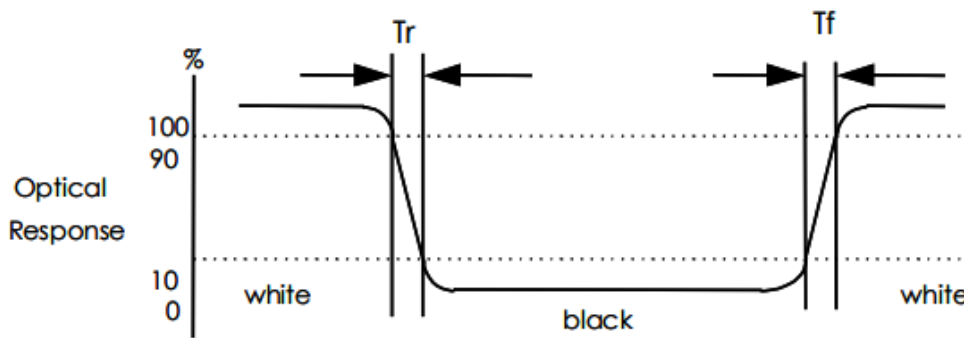
Note 4: Definition of contrast ratio.( Test LCD using DMS501)



$$\text{Contrast ratio}(Cr) = \frac{\text{Brightness of selected dots}}{\text{Brightness of non-selected dots}}$$

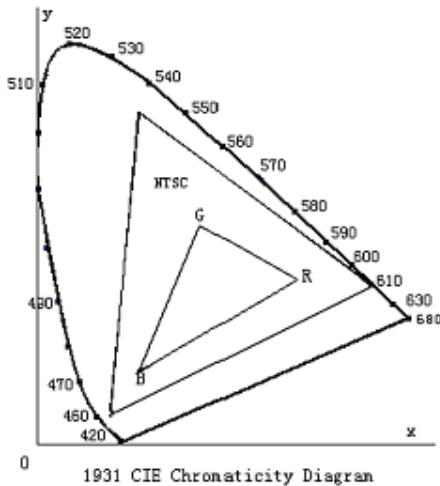
Note 5: Definition of Response time. (Test LCD using DMS501):

The output signals of photo detector are measured when the input signals are changed from “white” to “black”(rising time) and from “black” to “white”(falling time) , respectively. The response time is defined as the time interval between the 10% and 90% of amplitudes.Refer to figure as below.



The definition of response time

Note 6: Definition of Color of CIE Coordinate and NTSC Ratio.

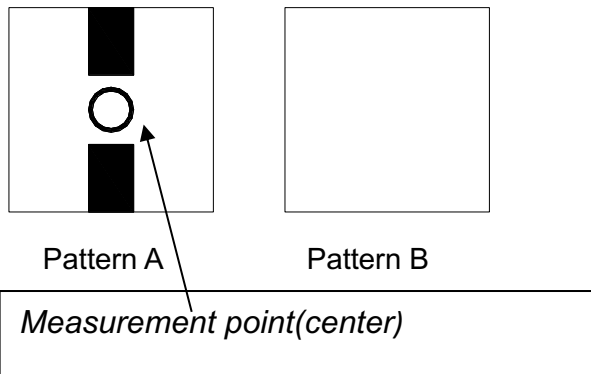


Color gamut:

$$S = \frac{\text{area of RGB triangle}}{\text{area of NTSC triangle}} \times 100\%$$

Note 7: Definition of cross talk.

Cross talk ratio(%)= $\frac{|\text{pattern A Brightness}-\text{pattern B Brightness}|}{\text{pattern A Brightness}} \times 100$



Electric volume value=3F+/-3Hex

## 8. Reliability Test Items and Criteria

Test Item	Test condition	Remark
High Temperature Storage	Ta = 80°C 96hrs	Note1,Note3, 4
Low Temperature Storage	Ta = -30°C 96hrs	Note1,Note3, 4
High Temperature Operation	Ta = 70°C 96hrs	Note2,Note3, 4
Low Temperature Operation	Ta = -30°C 96hrs	Note1,Note3, 4
Operation at High Temperature/Humidity	+60°C, 90%RH 96hrs	Note3, 4
Thermal Shock	-30°C/30 min ~ +80°C/30 min for a total 10 cycles, Start with cold temperature and end with high temperature.	Note3, 4
Vibration Test	Frequency range:10~55Hz Stroke:1.5mm Sweep:10Hz~55Hz~10Hz 2 hours for each direction of X. Y. Z. (6 hours for total)	
Mechanical Shock	100G 6ms,±X, ±Y, ±Z 3 times for each direction	
Package Vibration Test	Random Vibration : 0.015G*G/Hz from 5-200HZ, -6dB/Octave from 200-500HZ 2 hours for each direction of X. Y. Z. (6 hours for total)	
Package Drop Test	Height:60cm 1 corner, 3 edges, 6 surfaces	
Electro Static Discharge	±2KV, Human Body Mode, 100pF/1500Ω	

Note 1: Ta is the ambient temperature of samples.

Note 2: Ts is the temperature of panel's surface.

Note 3: In the standard condition, there shall be no practical problem that may affect the display function. After the reliability test, the product only guarantees operation, but don't guarantee all of the cosmetic specification.

Note 4: Before cosmetic and function test, the product must have enough recovery time,at least 2 hours at room temperature

## 9. Precautions for Use of LCD Modules

### 9.1 Handling Precautions

9.1.1 The display panel is made of glass. Do not subject it to a mechanical shock by dropping it from a high place, etc.

9.1.2 If the display panel is damaged and the liquid crystal substance inside it leaks out, be sure not to get any in your mouth, if the substance comes into contact with your skin or clothes, promptly wash it off using soap and water.

9.1.3 Do not apply excessive force to the display surface or the adjoining areas since this may cause the color tone to vary.

9.1.4 The polarizer covering the display surface of the LCD module is soft and easily scratched. Handle this polarizer carefully.

9.1.5 If the display surface is contaminated, breathe on the surface and gently wipe it with a soft dry cloth. If still not completely clear, moisten cloth with one of the following solvents:

— Isopropyl alcohol      — Ethyl alcohol

Solvents other than those mentioned above may damage the polarizer. Especially, do not use the following:

— Water                      — Ketone                      — Aromatic solvents

9.1.6 Do not attempt to disassemble the LCD Module.

9.1.7 If the logic circuit power is off, do not apply the input signals.

9.1.8 To prevent destruction of the elements by static electricity, be careful to maintain an optimum work environment.

a. Be sure to ground the body when handling the LCD Modules.

b. Tools required for assembly, such as soldering irons, must be properly ground.

c. To reduce the amount of static electricity generated, do not conduct assembly and other work under dry conditions.

d. The LCD Module is coated with a *Page:16/17* film to protect the display surface. Be care



when peeling off this protective film since static electricity may be generated.

## **9.2 Storage precautions**

9.2.1 When storing the LCD modules, avoid exposure to direct sunlight or to the light of fluorescent lamps.

9.2.2 The LCD modules should be stored under the storage temperature range. If the LCD modules will be stored for a long time, the recommend condition is:

Temperature : 0°C ~ 40°C

Relatively humidity: ≤ 80%

9.2.3 The LCD modules should be stored in the room without acid, alkali and harmful gas.

**9.3 The LCD modules should be no falling and violent shocking during transportation, and also should avoid excessive press, water, damp and sunshine.**

**END**